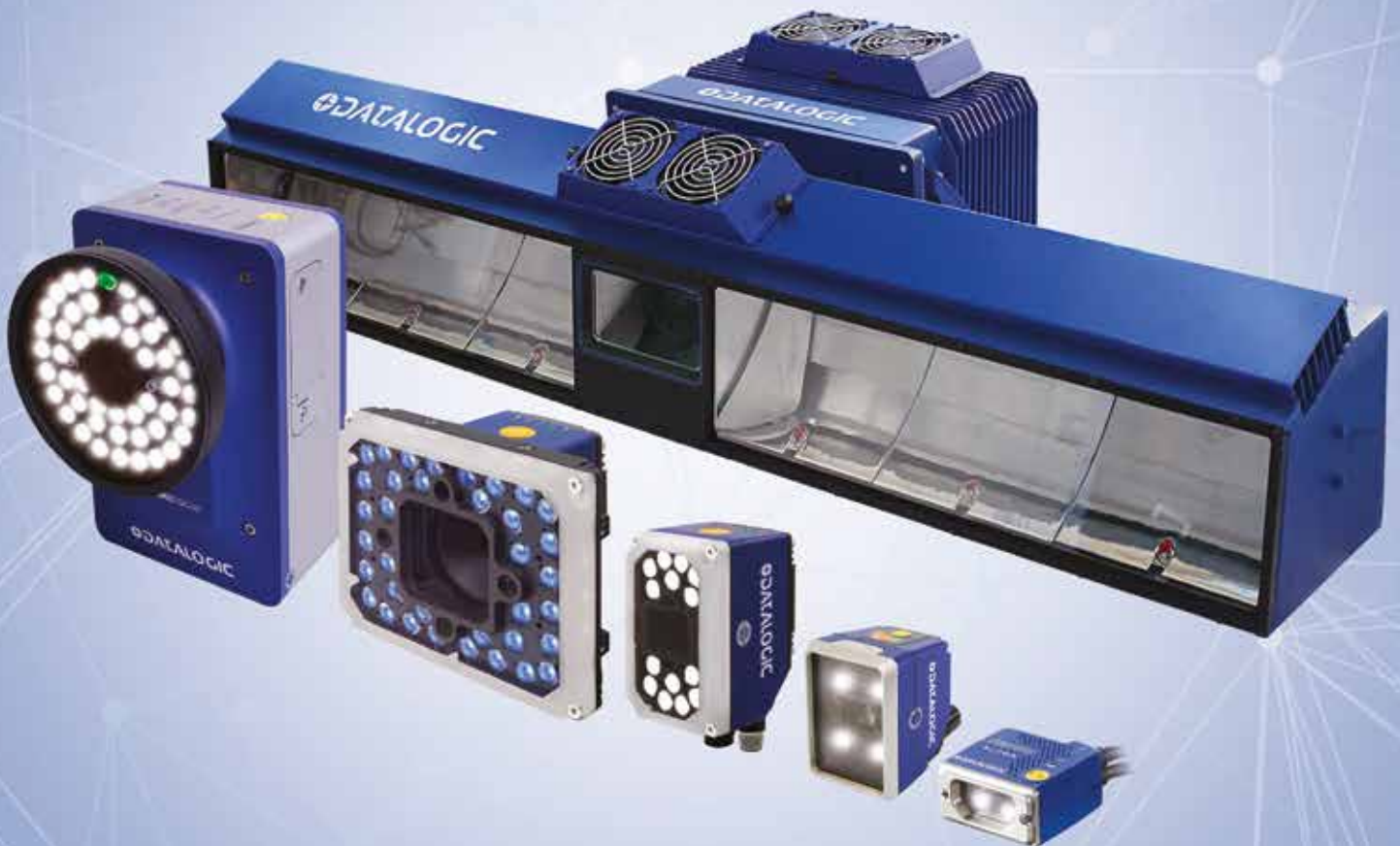


# STATIONARY INDUSTRIAL SCANNERS

## Product Group Guide



# IMAGE-BASED ID SCANNERS

## APPLICATIONS

### MATRIX 120™

#### Manufacturing

- Electronics: Track and trace PCB board manufacturing
- Print & Apply: label verification
- Food & Beverage: traceability
- Automotive: End of line, tire finishing and inspection

#### OEM

- Kiosks: ticketing machine

#### Healthcare

- Clinical Lab: vials identification
- Chemical and biomedical analysis machine



## Highlights

### MATRIX 120™

- Ultra compact dimensions and short cable versions for easy integration and possibility to mount on robotic arms
- External smart user selectable focus for high application flexibility
- ESD Version for electronic applications
- Polarized Version for 90° mounting and reflecting surfaces
- Wide angle models for proximity reading
- New flexible cables suitable for robotic arms applications

## Technical data

### MATRIX 120™

- WVGA for standard applications and 1.2MP models for high resolution codes
- 1D code models for best price/performance ratio
- Glass free protection window for application in the food industry
- Embedded Ethernet connectivity
- Serial and USB on the same model
- Protection class: IP65
- Operating temperature: 0°C to 45°C (32°F to 113°F)
- Supply Voltage: 5 to 30 Vdc

### MATRIX 210N™

#### Manufacturing

- Electronics: PCB board tracking, electronic product tracking

#### Medical & pharmaceutical

- Medical device traceability
- Pharmaceutical supply chain traceability

#### OEM

- Chemical & biomedical analysis
- Access control systems
- Self service systems (ATM, kiosks)
- Print & apply systems
- Document handling



### MATRIX 210N™

- Electronic focus control option
- Outstanding decoding capability on DPM and labeled 1D & 2D standard codes
- Straight and right angle models for smart mounting
- Industrial Protection: ESD-safe, YAG cut filter, IP65

### MATRIX 210N™

- Extremely compact dimensions: 50x25x45mm & 54x45x32mm
- WVGA image resolution, 60 frames/s
- Object speed: up to 2.0m/s
- Protection class: IP65
- Operating temperature: 0°C to 50°C (32°F to 122°F)

### MATRIX 220™

#### Manufacturing

- Electronics: Tracking/tracing of electronic products and components, DPM barcode reading
- Automotive: DPM code validation after marking, work-in-progress control, parts and assembly traceability
- Packaging: Primary packaging barcode reading, package traceability, food and beverage application

#### Document handling

- Fast decoding for high speed applications

#### Logistics Automation

- Carton and tote traceability
- Automated warehousing



### MATRIX 220™

- Compact dimension and rotating connectors for easy integration
- White, red and blue light All-In-One DPM illuminator for strong DPM reading performance including diffuser and polarizer in the same model
- Top performing High Power Illuminator models for challenging high speed applications
- Smart electronic focus control for high reading flexibility
- ESD and YAG cut filter protection as front cover accessory for extreme flexibility, reducing the number of models and simplifying the stock management
- New flexible cables suitable for robotic arms applications

### MATRIX 220™

- Multicore image processing platform excellent for high speed applications
- Hardware Acceleration to speed up algorithms and improve decoding capabilities
- 1.2 MP high resolution image sensor
- High Dynamic Range to improve image quality and contrast
- OPC UA protocol for Industry 4.0
- Power over Ethernet (PoE) option available
- Protection class: IP65 and IP67 extreme industrial grade for harsh environments
- Operating temperatures: -10 °C to 50°C (14°F to 122°F)

# IMAGE-BASED ID SCANNERS

## APPLICATIONS

### MATRIX 300N™ 1.3 & 2MP

#### Manufacturing

- Automotive: DPM code quality verification and trending after marking, work-in-progress traceability and control
- Electronics: Parts traceability and control, high resolution codes reading
- Packaging: Label print & check, end of line palletizing

#### Document Processing

- High speed process control

#### Medical

- Medical device traceability

#### Clinical Lab Automation

- Biomedical analysis machines
- Specimen collection machines

#### Logistics Automation

- Carton and tote traceability
- Automated warehousing



## Highlights

### MATRIX 300N™ 1.3 & 2MP

- High performance DPM reading
- Multi LED-Chains Illuminator with diffuser for DPM applications
- Manual and electronic focus control
- Polarized illuminator for reflecting surfaces
- Fast and high-resolution image sensors
- Power over Ethernet option

## Technical data

### MATRIX 300N™ 1.3 & 2MP

- CMOS global shutter sensor
- 1280 x 1024 (1.3 MP sensor) and 1600 x 1200 (2 MP sensor) image resolution
- Read rate: 60 frames/s (1.3 MP sensor); 45 frame/s (2 MP sensor)
- ESD and YAG cut filter protection options
- Protection class: IP65 and IP67 extreme industrial grade for harsh environments
- Operating temperature: 0°C to 50°C / 32°F to 122°F (1.3 MP models), 0°C to 45°C / 32°F to 113°F (2 MP models)

### MATRIX 320™

#### Automotive, Food & Beverage, Pharmaceutical, Electronics, General Manufacturing

- Direct Part Marking Reading
- Component and Part Traceability
- Wip Traceability (Automatic)
- Secondary Packaging Traceability
- End of Line Traceability

#### Intralogistics, Automated Warehouse, Distribution, 3PL, Retail, Transportation and logistics

- Inbound, Pallet Picking (Fork Lift)
- Print & Apply verification (Re-labelling)
- Depalletizing, Part Traceability
- Order Fulfillment (Automatic, Manual)
- Palletizing (Automatic, Manual), Cage Preparation
- Pallet Traceability, Pallet Wrapping
- Inbound, Pallet Picking and retrieval for outbound (Forklift)
- Reverse Logistics



### MATRIX 320™

- Innovative 2MP sensor performs outstanding Depth of Field (DOF) and Horizontal Field of View (FOVH)
- Smart configurable lighting solutions with 3 color options in two power versions
- Liquid lens remote focus control for extreme flexibility in production
- Covers and filters accessories for easy stock management
- New Generation FTP for live and high speed image saving
- New run time diagnostics and unreadable code classification to increase the overall productivity
- New configurable 360 degree multicolor visual feedback

### MATRIX 320™

- Multicore image processing platform excellent for high speed applications
- Hardware Acceleration to speed up algorithms and improve decoding capabilities
- Sensor: Image resolution 2.0 Mpixel (1920 x 1080) 16:9 form factor - 1/3" CMOS global shutter, 60 frames/s
- High Dynamic Range for the best image quality and contrast, greater DoF and higher reading performance
- Electronic focus control on 6mm, 9mm and 16mm. Internal illuminators colors: Blue, Red, White lights. Internal illuminators power: High Power 14 LEDs and Very High Power 36 LEDs
- OPC UA protocol for Industry 4.0
- Gigabit Ethernet Integrated Connectivity
- Protection class: IP65 and IP67 top industrial grade for harsh environments
- Operating temperatures: 0°C to 45°C (32°F to 113°F)

# IMAGE-BASED ID SCANNERS

## APPLICATIONS

### MATRIX 410N™

#### Manufacturing

- Automotive: Part traceability in assembly

#### Distribution & retail industry

- Manual Presentation
- Small Objects Sorting
- Totes content scanning

#### Medical & pharmaceutical

- Automated storage/retrieval
- Automated Order fulfilment/validation

#### Warehouse

- End of line, Carton/objects, single or multi-side scanning



## Highlights

### MATRIX 410N™

- Manual focusing
- C-Mount Lenses, focal length: 6mm, 9mm, 12.5mm, 16 mm, 25 mm, 35 mm, 50 mm
- White, Red, Blue illumination options
- On board image storage saving up to 3,000 image (scaled)

## Technical data

### MATRIX 410N™

- CMOS global shutter sensor
- 1.3 or 2.0 MP, 45-60 frames/s
- Protection class: IP65 and IP67 extreme industrial grade for harsh environments
- Operating temperature: 0°C to 50°C (32°F to 122°F)

### MATRIX 450N™

#### Transportation and Logistics

- Automated sorting
- Manual postal sorting
- Loading / unloading

#### Distribution & Retail

- Order fulfillment and verification
- Multimedia sorting
- Reverse logistic processes
- Static scanning



### MATRIX 450N™

- Very large reading area, FOV and DOF
- Outstanding dynamic reading capabilities, up to 3.2 m/s on 0.30 mm resolution 1D code
- White and Blue illumination options
- Persistent Image Saving on specific reading results (No Read) for diagnostics or reporting

### MATRIX 450N™

- 5MP image sensor, 15 frames/s
- Gigabit Ethernet Integrated Connectivity
- C-Mount Lenses, focal length: 16 mm, 25 mm, 35 mm, 50 mm
- Protection class: IP65
- Operating temperature: 0°C to 50°C (32°F to 122°F)

### XRF 410N™

- E-Commerce
- General material handling with reusable totes
- Medium object sortation for couriers
- Postal Sorting
- End-of-line



### XRF 410N™

- Easy to select the correct model
- Easy to install
- Increase customer productivity
- Ease of use
- Solves the most demanding sortation applications
- Easy to monitor and validate status

### XRF 410N™

- Full working solutions in one order number
- Factory calibration, optimized for code resolutions 0.25 mm, 0.33 mm, 0.38 mm
- Factory calibration, optimized for speeds up to 2.2 m/s



# IMAGE-BASED ID SCANNERS

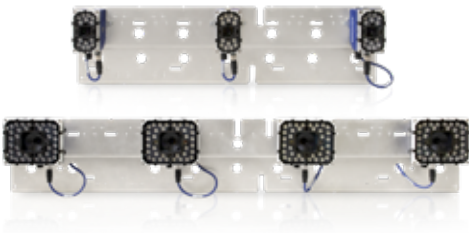
## APPLICATIONS

### STS320™

#### Factory Automation / Manufacturing

*Automotive, Tires Manufacturing and Tires Distribution Center*

- Tire and Wheel identification
- Tire tracking and traceability both in Green Vulcanized Tires (curing press) and Finished Tires
- High speed sorting on omnidirectional conveyors
- Bottom (under belt) reading



## Highlights

### STS320™

- Outstanding reading performance
- Compact and out of the box solution fully pre-assembled, pre-configured and validated in the factory for the quickest installation on the field and for fast replacement
- New run time diagnostics and unreadable code classification to increase the overall productivity
- Live and high-speed image saving for post processing analysis
- New web Mosaic view to monitor all the readers
- Completely new state of the art DL.CODE software

## Technical data

### STS320™

- New configurable 360 degree multicolor visual feedback, green spot and Red spot LEDs
- Image resolution 2.0 Mpixel (1920 x 1080) 16:9 form factor - 1/3" CMOS global shutter
- Sulfur gas resistance available for all the models according to ISO EN 60068-2-43
- Protection class: IP65 and IP67 top industrial grade for harsh environments
- Operating temperature: -10 to 50°C (14 to 122°F)

### TC1200

- Access control systems
- ATL (Automated Tape Libraries)
- Self service systems (ATM, kiosks)
- OEM integration in automatic machines
- Game automation (Lotto, Lottery, etc.)
- Chemical and blood analysis machines
- Print & apply systems
- Film processing machines
- Shipping & Receiving
- Cross docking



### TC1200

- Cost-effective
- Embedded code reconstruction software
- Very high density code reading (up to 0.1mm / 4mils)
- Scanner and scan engine version
- No moving part (MTBF>200.000 hours)
- Designed for OEM integration

### TC1200

- CCD reader
- Scan rate: up to 320scans/s
- Reading range: 50 to 430mm
- Max. resolution: 0.1mm (4 mils)
- RS232 and USB model
- Power supply: 5VDC, 2W max.

# CONNECTIVITY

Wide range of **connectivity** for the identification product range with standard IP65 (NEMA4) protection class and operating temperature up 0°C to 50°C.

## CBX SERIES

- Simplified wiring to speed up installation
- Scalable and modular connectivity
- Base and extended models
- Modular field bus connectivity
- Optional backup/restore module
- Optional display
- Low temperature model



## QL SERIES

- Easy, fast, modular and cost-effective solution with "plug-in connection"
- Ethernet TCP/IP and EtherNet IP (QL500)



## SC SERIES

- Protection class: IP65 (NEMA4)
- Operation temperature: 0 to 50°C
- Network or cluster controller
- Dedicated data-collector for maximum reading performance
- Scalable and modular connectivity
- Backup/restore module
- Maximum compatibility and scalability
- Ethernet TCP/IP, EtherNet IP, Profibus, DeviceNet modules



# IMAGE-BASED ID SCANNERS

## APPLICATIONS

### AV500/AV900

#### Transportation and Logistics

- Automated sorting
- Manual sorting
- Dimension Weigh Scan System
- Non conveyable Auto dimension systems
- Carton and tote traceability
- OCR and Videocoding
- Extended ID and image saving

#### Distribution & Retail

- Order fulfillment and verification
- Multimedia sorting
- Reverse Logistics process

#### Airports

- Baggage handling systems
- Automated tag reading



## Highlights

### AV500/AV900

- High performance camera (5MP AV500, 9MP AV900) with integrated image processing system
- Patented dynamic, sequential or adjustable focus system offering extended depth of field
- Continuous, no-flashing white or red illumination
- Image saving to external locations through the dedicated high speed Gigabit Ethernet port
- New generation decode algorithm to read very bad quality label
- Multiple format Image saving from full definition to highly compressed JPG
- Patented PackTrack allows for item spacing of >50mm ( 2 in ) for maximum throughput

## Technical data

### AV500/AV900

- Sensor: CMOS 5MP (AV500), 9MP (AV900)
- Max image Acquisition = 32 frames/s
- Readable symbologies: all standard 1D and 2D codes
- Connectivity: 2 Ethernet TCP/IP, 2 serial communication interfaces
- Protection class: IP65
- Operating temperature: 0°C to 50°C
- Factory warranty: 2 years

# LINEAR CAMERAS

### AV7000™

#### Transportation and Logistics

- Postal and courier express sorting
- Revenue recovery
- Reverse logistic processes
- OCR and Videocoding
- Extended ID and Image saving

#### Distribution & Retail

- Large distribution centres
- Receiving / shipping systems
- Multimedia sorting



### AV7000™

- Single view high quality picture on large conveyor (1400 mm/55 inch)
- Excellent reading performances on high speed conveyors: 4.8m/s (945fpm)
- Patented Pulsed Lighting System to reduce reading station footprint 2.2m (7ft)
- Patented Autofocus System offering extended DoF
- Patented Digital Zoom technology assuring constant DPI resolution
- New generation decode algorithm to read very bad quality label
- Multiple format Image saving from full definition to highly compressed JPG
- Integration with dimensioning and scale system

### AV7000™

- CMOS linear sensor: 8192 pixels
- Image resolution: 110-260DPI (application dependant)
- Scan rate: 33KHz
- Readable symbologies: all standard 1D and 2D codes
- High quality Image for OCR and Videocoding
- Connectivity: RS232/RS485, Ethernet
- Video output: Gigabit Ethernet, CC-Link
- Protection class: IP65
- Operating temperature: 0°C to 50°C
- Factory warranty: 2 years

# SYSTEM CONTROLLERS

## APPLICATIONS

### SC5100

- Parcel Sorting
- Small Package / E-Commerce
- DWS
- Airport BHS
- Distribution centers
- Irregulars / Extra large / Pallets
- Loading / Unloading



## Highlights

### SC5100

- Laser (DS-DX), Imagers (AVs), Dimensioner Native Integration
- 4 GB ETH embedded switch
- RFID scale and 3rd Party Integration
- Industrial Grade protection (IP65, no need for added enclosure)
- 5 inch Graphical Color display and Clear Status LEDS
- Supports Full Redundant Layout
- Support to Legal For Trade DWS Systems (provide Alibi for scale, DWS systems)
- Built-in Ethernet, Ethernet/IP and optional Profibus and Profinet models
- Access locally or remotely from one point all the connected components

## Technical data

### SC5100

- Power supply: 24 VDC +/- 20%
- Serial Main (isolated) RS-232/ RS-422 full-duplex: 1,200 to 115,200 bits/s
- Serial Aux RS-232: 1,200 to 115,200 bits/s
- EBC and SyncNet Internal Network: 100 Mbit/s
- Inputs (main): 3 polarity insensitive optocoupled inputs: Trigger, Encoder/ Tachometer, IN3
- Outputs (main): 3 optocoupled outputs
- LCD display: 5 inch graphical color
- Keypad: 5 keys
- Configuration modes: e-Genius
- Parameter storage: Non-volatile extractable SD card
- Operating temperature: 0 to 50 °C
- Protection Class EN60529: IP55\*
- Mechanical dimensions: 349 x 175 x 89 mm / 13.75 x 6.89 x 3.5 in

\*Sealed connectors or connector covers required.

# DIMENSIONER

## APPLICATIONS

### DM3610 1-Head Solution

- Parcel revenue recovery
- Distribution Center spatial management
- Automated shipping and manifesting systems
- Trailer load planning



## Highlights

### DM3610 1-Head Solution

- NTEP, OIML and MC certified for Legal for Trade applications on belt conveyors
- NTEP and OIML certified for Legal for Trade applications on cross-belt
- Works for cuboidal
- Works for singulated and non-singulated package flows

## Technical data

### DM3610 1-Head Solution

- Only cuboidals
- Singulated (spacing >20mm)
- Accuracy (L x W x H) = +/-5mm x +/- 5mm x +/- 2mm at transport speeds up to 3.1 m/s
- Maximum box size 2500x1200x900mm
- Operating temperature: 0°C to 50°C
- Protection class: IP 65
- Factory warranty: 2 years

### DM3610 2-Head Solution

- Parcel revenue recovery
- Distribution Center spatial management
- Automated shipping and manifesting systems
- Trailer load planning



### DM3610 2-Head Solution

- NTEP and OIML certified for Legal for Trade applications on belt conveyor and cross-belt
- Works for cuboidal and irregular package flows
- Works for singulated and non-singulated package flows
- Reduced shadowing

### DM3610 2-Head Solution

- Cuboidals and Irregulars
- Singulated (spacing > 25mm)
- Maximum box size 2500x1600x1000mm
- Operating temperature: 0°C to 50°C
- Protection class: IP 65
- Factory warranty: 2 years

# LASER BAR CODE SCANNERS

## APPLICATIONS

### DS2100N/DS2400N

#### Automated warehousing

- Conveyor sorting
- Picking systems
- Automated storage and retrieval systems
- Tote Reading

#### Automated Shopfloor

- Item and part tracking
- Process control and packaging
- Packaging and compliance

#### OEM

- High speed document handling machines
- Print & apply systems
- Automatic chemical and biomedical analysis machines
- Reverse vending machines (can and bottle recycling)



## Highlights

### DS2100N/DS2400N

- Embedded Ethernet connectivity
- Two Profinet Ports (MRP supported)
- Embedded Ethernet Switch
- Rotating connector block
- Compact dimensions
- Excellent performance on low quality and damaged labels
- DS2100N: Up to a 300 mm (11.8 in.) reading distance
- DS2400N: Up to a 600 mm (23.6 in) reading distance
- Oscillating Mirror (Accessory)

## Technical data

### DS2100N

- Scan rate: up to 1000scans/s
- Reading range: 50 to 300mm
- Max. resolution: 0.12mm (5mils)
- Power supply: 10 to 30VDC, 4W max.
- Protection class: IP65
- I/O: 2 inputs, 2 outputs; optocoupled

### DS2400N

- Scan rate: up 1000scans/s
- Reading range: 70 to 600mm
- Max. resolution: 0.12mm (5mils)
- Power supply: 10 to 30VDC, 4W max.
- Protection class: IP65
- I/O: 2 inputs, 2 outputs; optocoupled
- Operating temperature: -35°C to 45°C (subzero model), 0°C to 45°C (standard model)

### DS5100

- Automotive: WIP Control, Parts Traceability
- Food & Beverage: Shipping Process, End of Line Palletizing
- Pharmaceutical: Secondary Package Control
- Warehousing: Tote Tray Identification, Automatic Picking Process Control
- Sorting on logistic and distribution lines
- Print & Apply



### DS5100

- Selectable focus system
- Display and multi-language messages
- ID-NET™ embedded interface for high speed communication network
- Single/Double Ethernet port
- Integrated oscillating mirror models
- Profinet (MRP supported)
- Compatible with SC500/DS8110/DX8210

### DS5100

- 800-1000 scans /sec
- 2 inputs + 2 outputs
- RS232 + RS485 serial port, Ethernet, Profinet
- Typical reading range of 200 – 1350 mm
- Subzero ver. up to -35°C (-31°F)
- Power supply: 10-30 Vdc
- Protection class: IP65

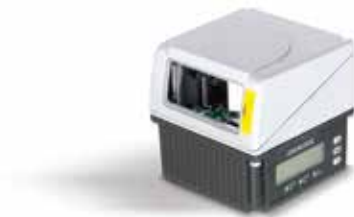


# LASER BAR CODE SCANNERS

## APPLICATIONS

### DS6400

- Automated warehousing
- Shopfloor on automotive, electric appliances, food & beverage
- Sorting on logistic and distribution lines
- Omni-sorting on small conveyors
- End of line palletizing



## Highlights

### DS6400

- Flash™ (Dynamic) laser optics
- Step-A-Head™ feature
- ACR4™ Advanced Code Reconstruction
- Integrated oscillating mirror models
- Built-in connectivity to Ethernet/Devicenet/Profibus networks
- PackTrack™ tracking system
- Embedded display and keypad

## Technical data

### DS6400

- Optics: Flash™ (Dynamic) (DS6400)
- Scan rate: Up to 1200scan/s
- Reading range: 300 to 2500mm
- Max. resolution: up to 0.2mm (8mils)
- Connectivity: RS232, RS485, EtherNet IP, Ethernet TCP/IP
- I/O: 4 inputs, 3 outputs; optocoupled
- Power supply: 15 to 30 VDC

### DS8110/DX8210

- Airport Baggage Handling
- Parcel Sorting
- Retail Distribution Center
- Loading/Unloading System
- Shop Floor and Manufacturing
- Automatic Warehousing Management



DX8210



DS8110

### DS8110 linear barcode scanner/ DX8210 omnidirectional barcode scanner

- ALL-IN-ONE architecture (DX8210)
- Top class reading performance
- Excellent performance on Low quality code
- DST (Digital Signal Technology) offering stable and constant performance at any operative conditions
- Multi laser ASTRA G3 technology
- Ethernet Bus Connections
- Fully redundant configuration, no single point of failure
- Compact mechanical dimensions
- Unmatchable ease of use and ease of installation
- e-GENIUS web browser programming tools
- Modular architecture and building block configurations
- Ease maintenance and automatic replacement

### DS8110

- Scan pattern type: linear
- Scan rate: 1000 scans/s
- Reading range: 500 to 1900mm
- Resolution: min 0.25 mm (10 mils)/max 0.50 mm (20 mils)
- Dimensions: 216 x 96 x 127 mm [8.5 x 3.8 x 5 in]
- Protection class: IP65
- Operating temperature: 0°C to 50°C
- Factory warranty: 2 years

### DX8210

- Scan pattern type: X-Pattern
- Scan rate: 1000scans/s
- Resolution: min 0.25 mm (10 mils)/max 1.0 mm (40 mils)
- Dimensions: 381 x 328 x 92.5 mm [15 x 13 x 3.6 in]
- Protection class: IP65
- Operating temperature: 0°C to 50°C
- Factory warranty: 2 years

# SOFTWARE

## WebSentinel™ PLUS

WebSentinel Plus is a supervisory software solution for monitoring operational activities of reading devices through a single web browser based interface. It collects data from scan points over Ethernet network, and presents the information flow as visual onscreen information. It also stores this information in a database and, periodically or on demand, produces performance, diagnostic, and tracking reports.

WebSentinel Plus provides visibility to enterprise controlled automated systems from a high level view of the each connected facilities down to a detailed view of any specific barcode reader device.



## APPLICATIONS

- Transportation and logistics (postal and couriers)
- Distribution & retail (warehouse and distribution centers)
- Airport baggage handling
- Automated warehouse intralogistics
- Factory automation work in progress traceability
- Tracking and traceability for tire manufactures
- Factory automation work in progress traceability

## Highlights

- Real-Time Performance at a glance
- Front page that shows real-time reading performance, package activity and device diagnostics in foreground
- Complete control from enterprise to device
- Quickly 'drill-down' from enterprise to facility to scan point to device level views
- Database searches and reporting
- Image file browsing for imagers devices (linear and area camera)
- Configurable alarm & event notification via email
- Individual user accounts with configurable roles and privileges
- Web-based client
- Cross platform server application (Windows and Linux OS)

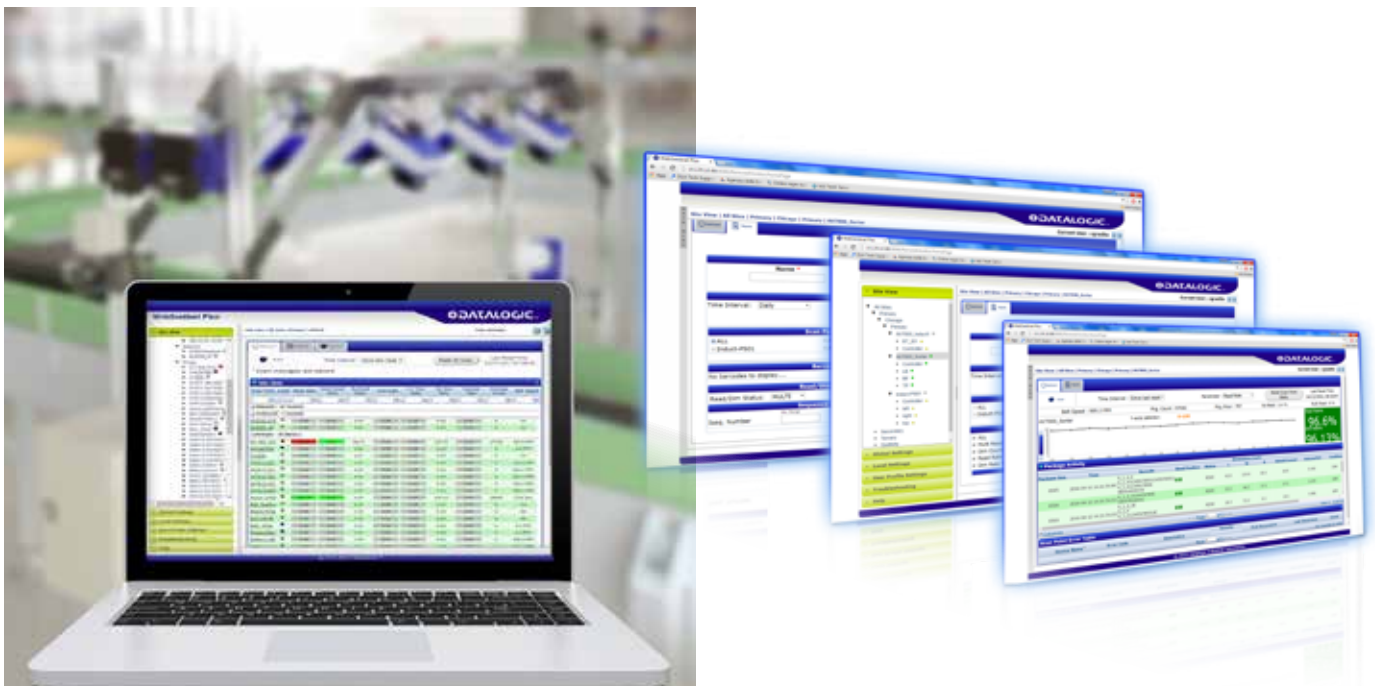
## Technical data

### Software requirements

- Operating System: Windows 7 - 10 (32 Or 64-Bit, 64-Bit Preferred), Linux on Datalogic Hw or on Request
- Web Browsers: Internet Explorer 10 (Or Later), Chrome 36 (Or Later), Firefox 30 (Or Later)
- Java: Version 7 (Or Later)

### Server Hardware Recommendations

- Dedicated Computer With The Following:
  - Intel Core I3, 2.1 Ghz Or Equivalent Processor
  - 8 Gb Ram
  - 500 Gb Hard Disk With At Least 350 Gb Free Space For Package Data
  - Two 10/100/1000Mb Ethernet Port
  - Usb 2.0 Port For Software Installation



# TECHNOLOGIES

**YOU DON'T HAVE TO RESTRICT YOUR POWER OF CHOICE. WE HAVE ALL NEEDED TECHNOLOGIES.  
THE BEST SOLUTIONS IS THE ONE TAILORED TO YOUR NEEDS.**

## Common features

- Industrial Design and Robustness
  - Extended temp. range 0-50°C
  - Dust+water protection IP65
- Investment Protection
  - 2 Years Factory Warranty included
  - Ease of Care additional Programs

## Image Based ID reader / Matrix and AV500/900

- Patented Green and Red Spot
- Aiming System
- Patented Pack Track for max Throughput
- Digimarc Barcode reading
- Full Industrial Connectivity
- Image saving

## Linear Camera / AV7000

- Patented Pulsed Light (compact layout)
- Single Image
- Digital Zoom (constant DPI)
- Patented Pack Track for max Throughput

## Laser Barcode / DS-DX

- ACR, advanced Code reconstruction 1D omni directional reading capability
- ASTRA, electronic real time adjusting focus distance, non-mechanical auto-focus
- Patented Pack Track for max Throughput

## Dimensioner

- Dynamic measurement Legal For trade certifications
- Integration with Barcode readers

### OIML – single head

- Max speed = 3.15 m/s
- Max. box size 2500x1600x1000mm
- Tolerance 5x5x2 mm
- Min spacing 20 mm

### OIML – dual head

- Max speed = 3.15 m/s
- Max. box size 2500x1600x1000mm
- Tolerance 5x5x2 mm
- Min spacing 25 mm

### NTEP – single / dual

- Max. speed = 650 ft/min
- Max. box size 98x63x40 in
- Min. box size 50x50x20 mm
- Tolerance .2x.2x.1 in
- Min spacing 1 in

## MATRIX SERIES HIGHLIGHTS

- Matrix series, including XRF410N and ST320, is a complete product range to solve challenging industrial traceability applications
- The common Matrix line features and benefits allow to save time and money in every adoption phase: training, installation, use, maintenance

## Configuration and Monitoring

- DL.CODE™ configuration software is a market recognized standard in ease of installation and configuration, compatible with latest Windows OS versions
- DL.CODE Web Monitoring for remote access to the reader from any mobile device
- DL.CODE Web Device Discovery to quickly access all the readers in the network
- Remote web-based WebSentinel Plus supervisory software

## HMI and visual feedback

- Patented Green spot and Red spot
- Aiming system for quick setup during installation
- X-Press intuitive HMI
- X-PRESS™ Human Machine Interface
- X-PRESS™ Push Button
- 7 LEDs (Status, Communication, Trigger, Good, Read, Ready, Power on, Network) for easy of use and intuitive setup

## Patented PackTrack

- Allows challenging traceability of items with very low item gap, from 50mm (2in), for the maximum throughput

## Digimarc

- Digimarc Barcode reading technology for added value decoding applications to read invisible barcodes integrated on any printed surface. It is available on Matrix 120, Matrix 220, Matrix 320

## Patented CHPM mode

- Continuous High Power Mode lighting to eliminate the flickering effect avoiding to disturb the operator eyes

## On Board Full Industrial Connectivity

- Ethernet 10/100 Mbit/s and Ethernet 10/100/1000 Mbit/s on Matrix 320 and STS320
- Embedded on board Ethernet protocols: TCP/IP, UDP, FTP and Fieldbus PROFINET IO (for Matrix 450N available through module integrated in the CBX), EtherNet IP, Modbus TCP
- Serial RS232/RS422/RS485 up to 115.2 Kbit/s + Aux RS232 (Aux not available on Matrix 120)
- USB on M120 and USB HID keyboard profile through converter cable for the other Matrix
- ID-NET™ reader clustering/networking to extend the reading area coverage on single side and multi-side applications

## Top Industrial Grade

- Extreme Industrial grade, IP rate and wide operating temperature range for harsh environments
- Sulfur gas resistance according to ISO EN 60068-2-43 to safely work in the green tires vulcanization process environment



Rev. 20\_04/2021



9C0002870

Product and Company names and logos referenced may be either trademarks or registered trademarks of their respective companies. We reserve the right to make modifications and improvements.

[www.datalogic.com](http://www.datalogic.com)