



SKORPIO X5

is more...



**The ultimate
Data Capture
Mobile Computer
for modern applications**



DATALOGIC
EMPOWER YOUR VISION

Copyright Datalogic 2020 – Confidential Proprietary Information

SKORPIO X5 – guided tour

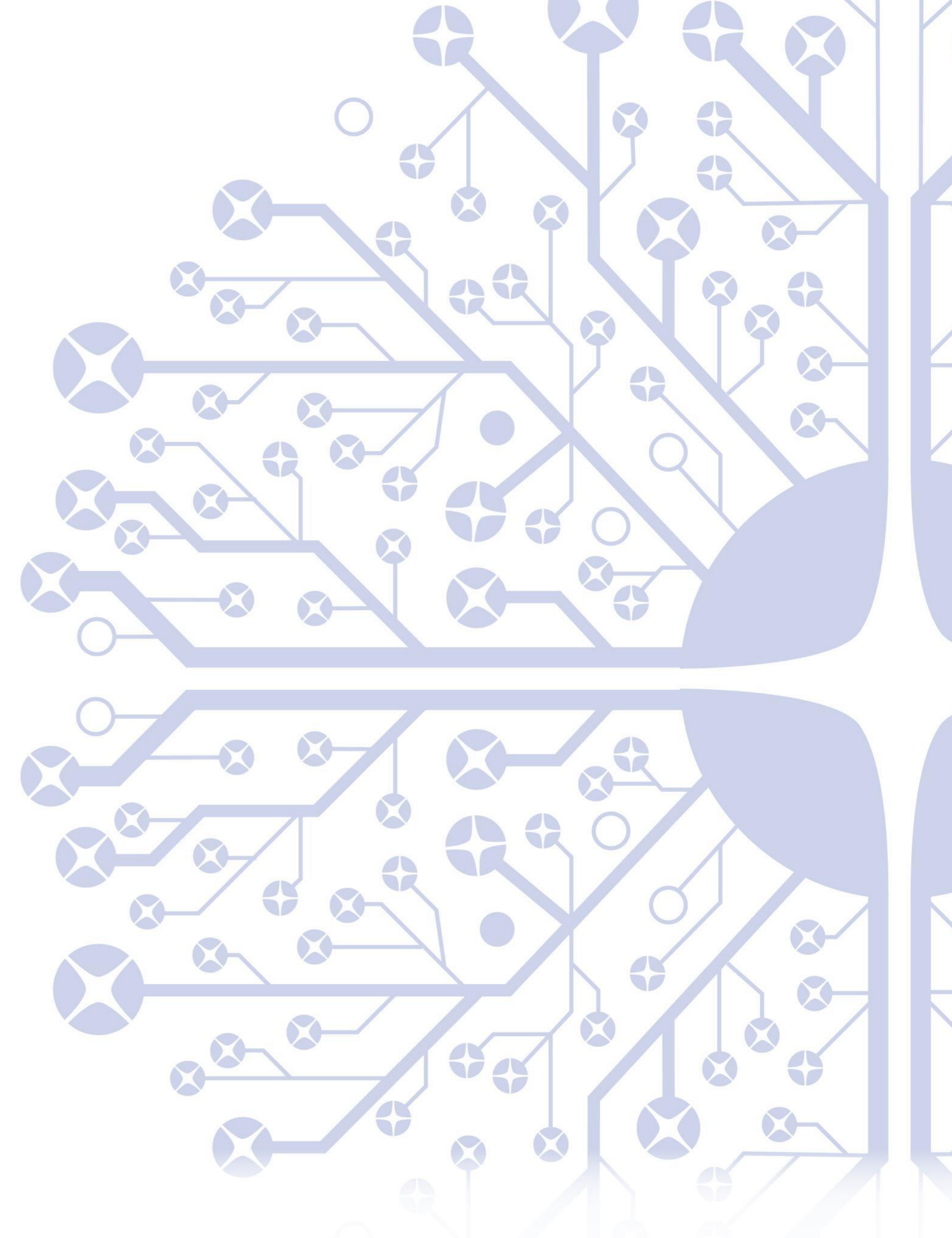
- User interface
- Ergonomics
- Data Capture
- Docking system specials
- Mobility Suite
- Key Applications
- Top 5 Reasons to BUY
- Skorpio X5 is more...



SKORPIO X5



User Interface



Complete User Interface for the best ease of use



28-Key Numeric 38-key Functional

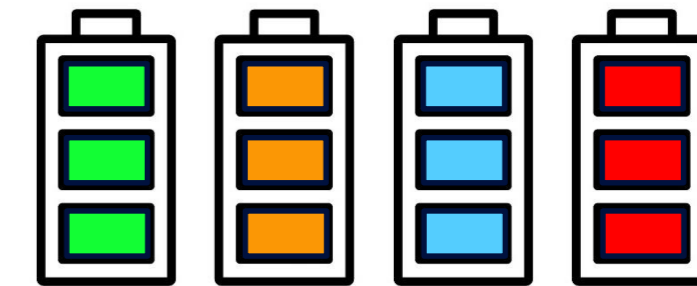


47-Key Alpha-Numeric

3 Keyboard
Layouts



4.3" Display

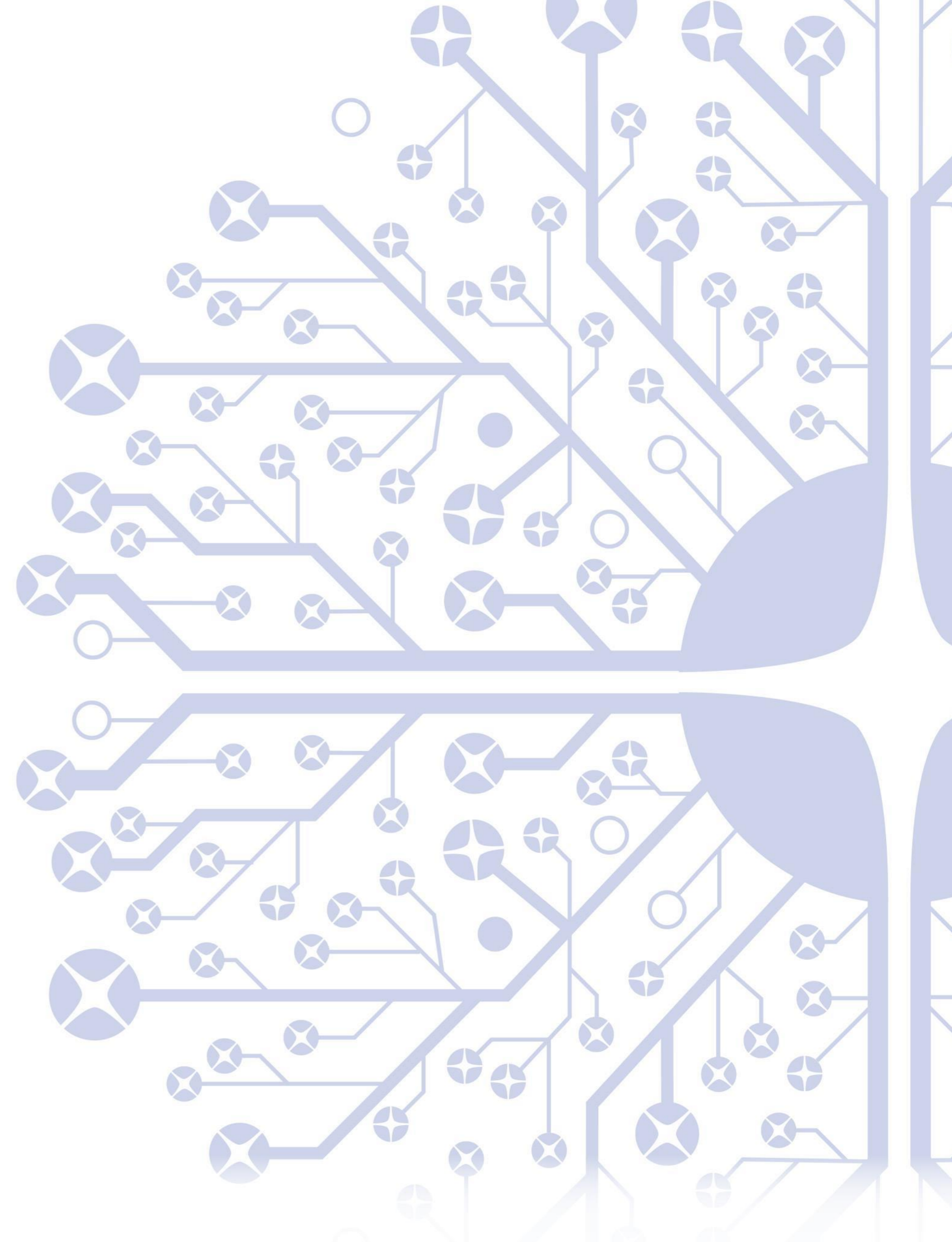


Intelligent
Battery Pack

SKORPIO X5



Ergonomics



Excellence in Ergonomics



**2 Form Factors &
In field convertible**



488 gr. HH
600 gr. Pistol
with Std. Battery

Light Weight



Quickly adapt the device
To each user comfort

**Adjustable
Hand-strap**



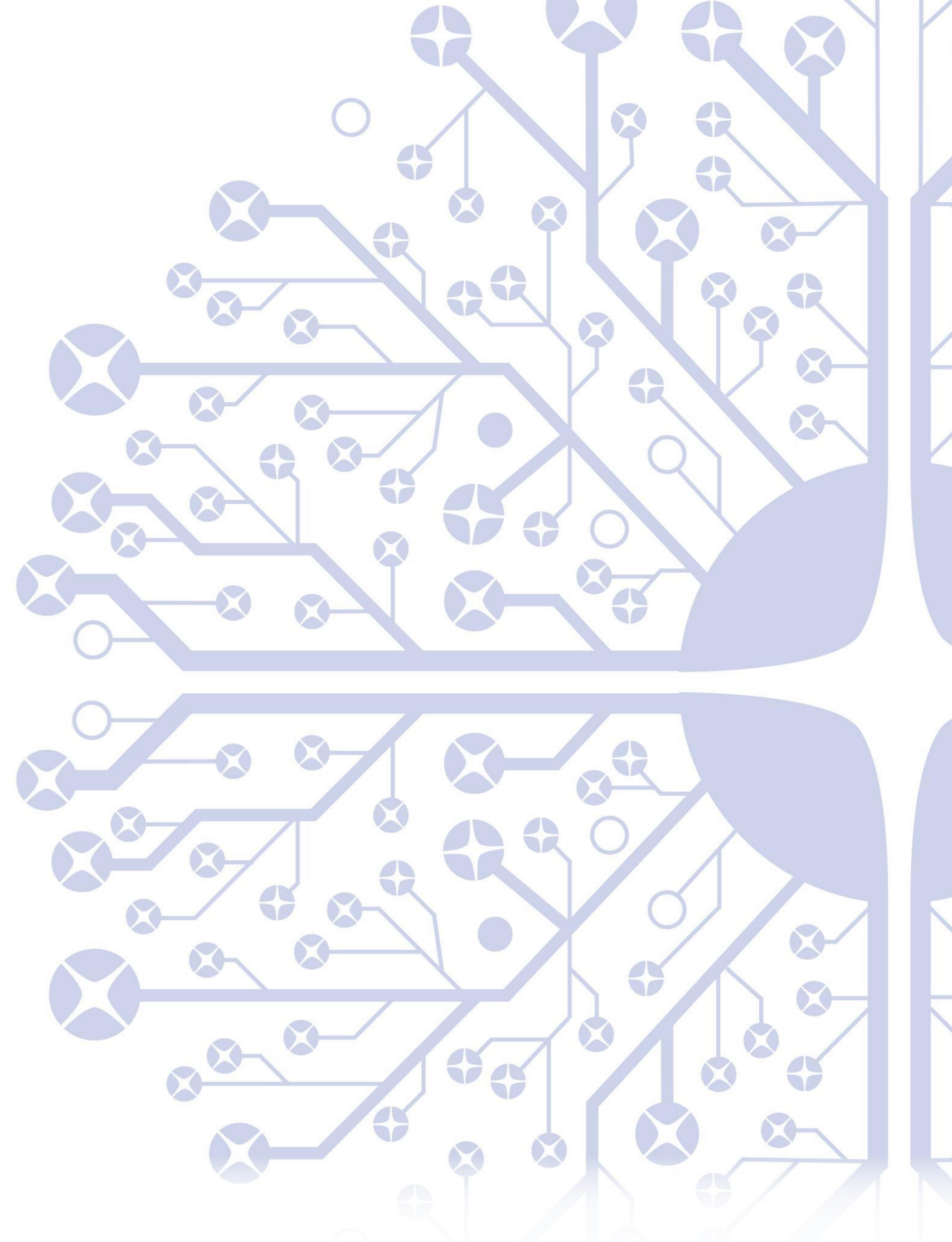
reducing the end user
fatigue during the all-
day long use

**Conveniently
balanced**

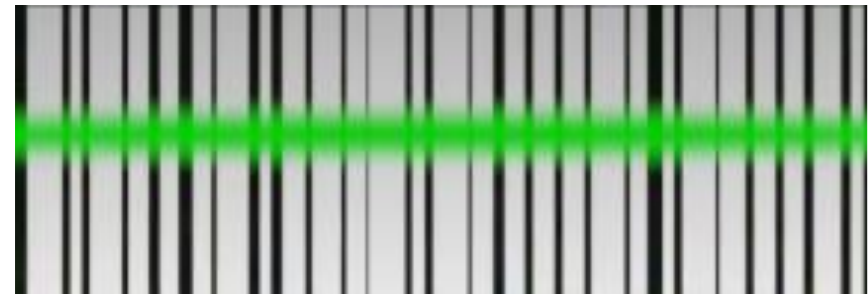
SKORPIO X5



Data Capture

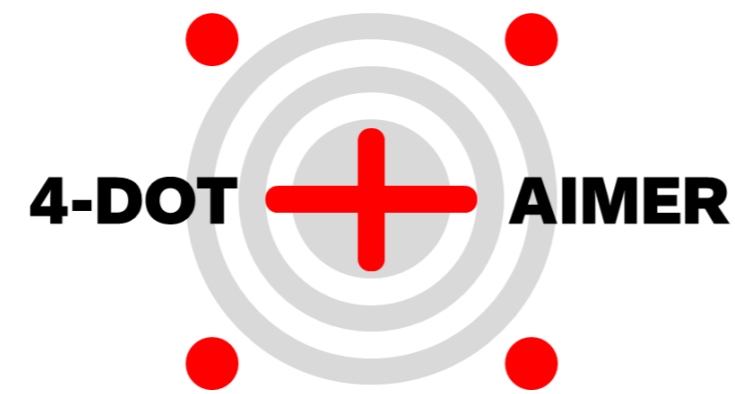


4 data capture modes + build-in camera



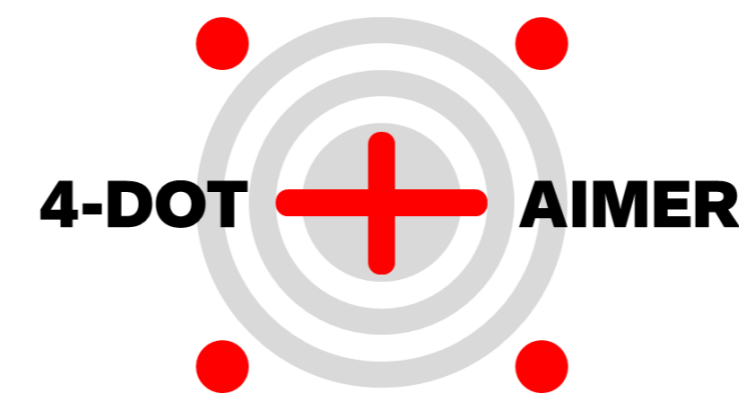
Laser like aiming
Reading through plastic
film, with Green Spot™

1D Linear Imager



High performance
imager, with Green
Spot™

**2D Imager
Standard Range**



Extra performance
imager, with Green
Spot™

**2D Imager
Mid-Range**

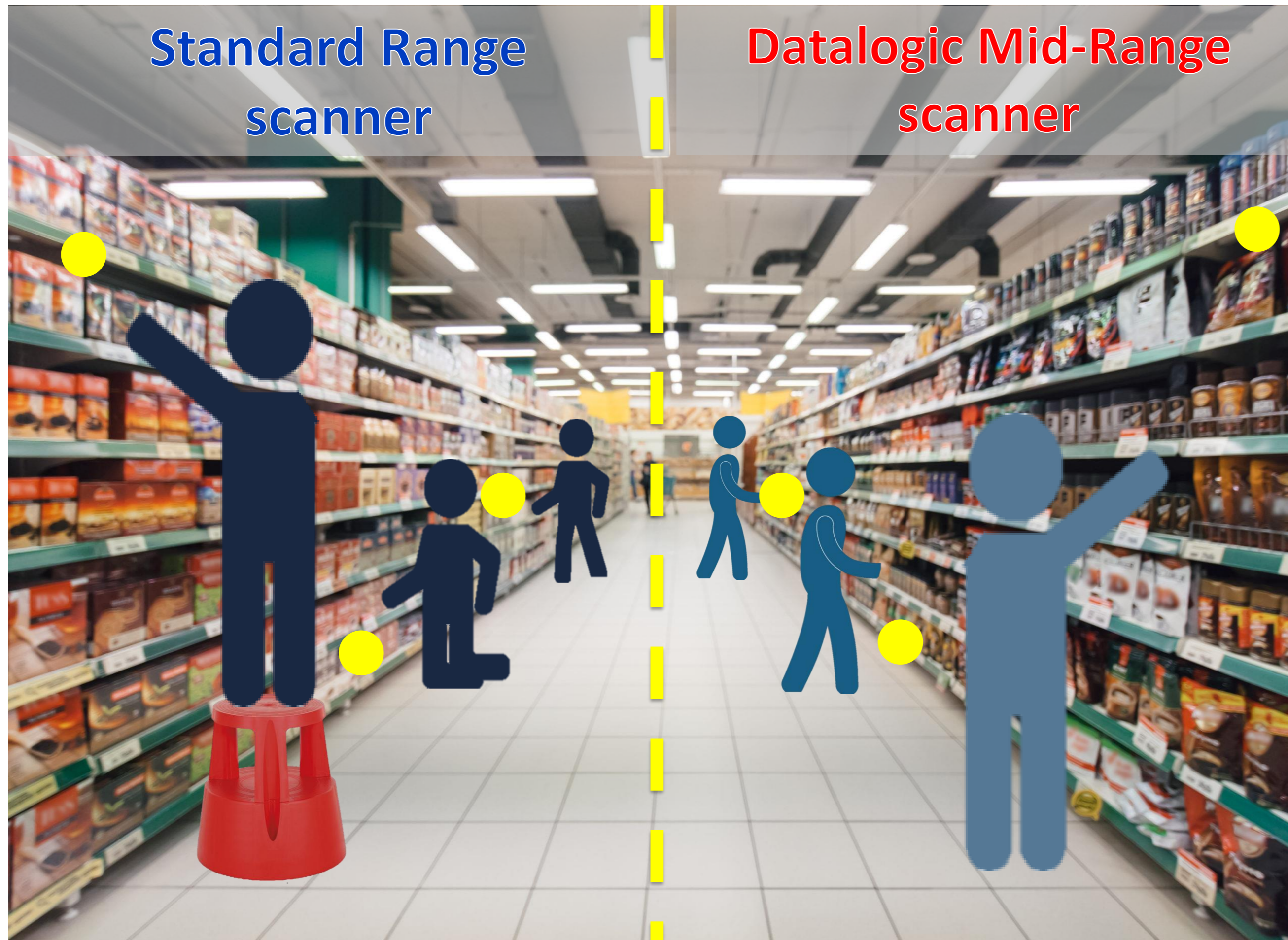


Hyper performance
imager, from close
distance up to 15mt
and beyond

**2D Imager
Auto-Range**



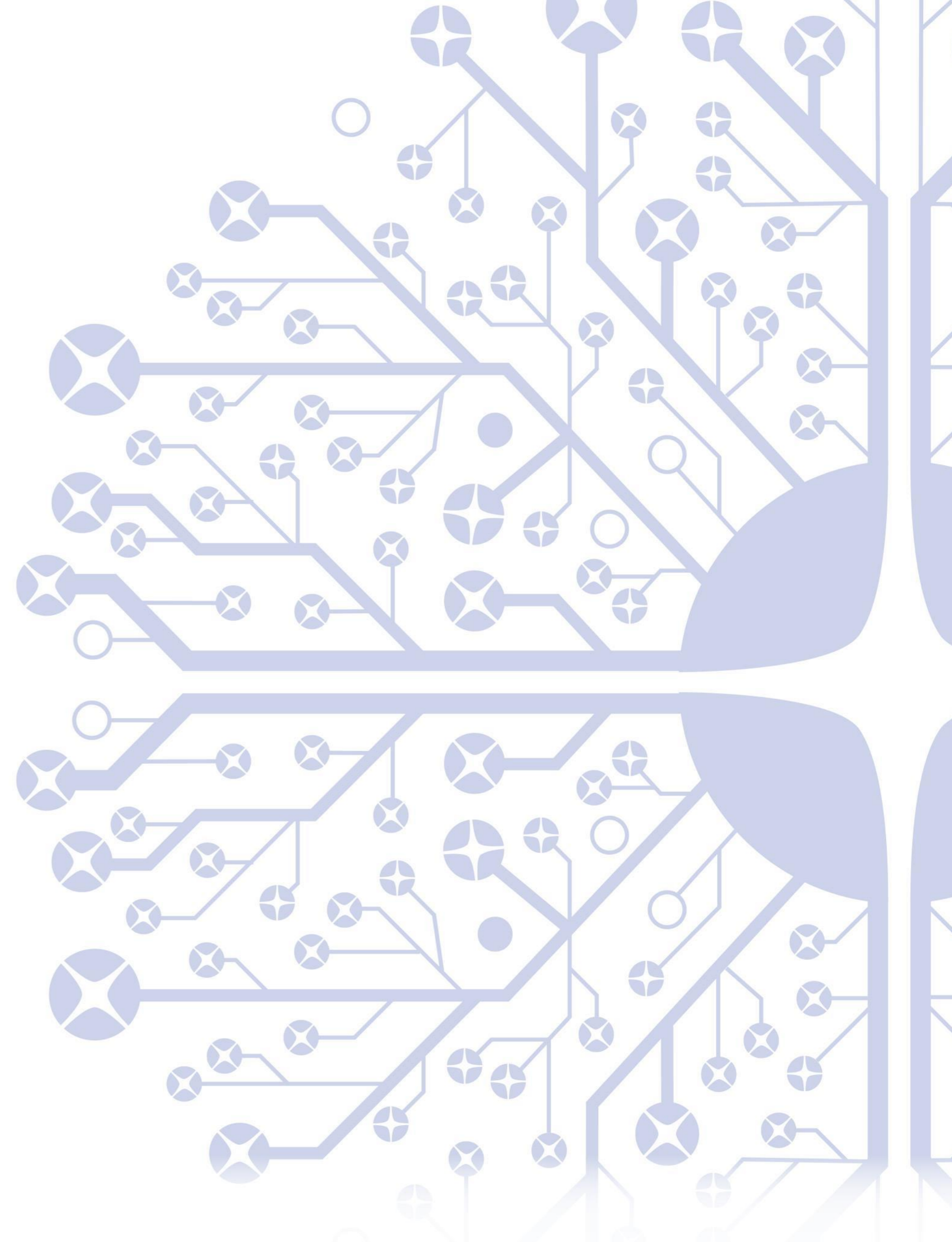
Mid-Range value in In-Store applications



SKORPIO X5



Docking system specials



Wireless Charging



Datalogic is again the first in the market introducing a rugged PDT featuring Wireless Charging technology



Reliability

Maximized Uptime

Better Performance

Ease of Use

Future Proof

Battery Lifetime



DATALOGIC
EMPOWER YOUR VISION

Protection against unauthorized use

Prevents possible theft

Ensures a one-to-one assignment between user and device



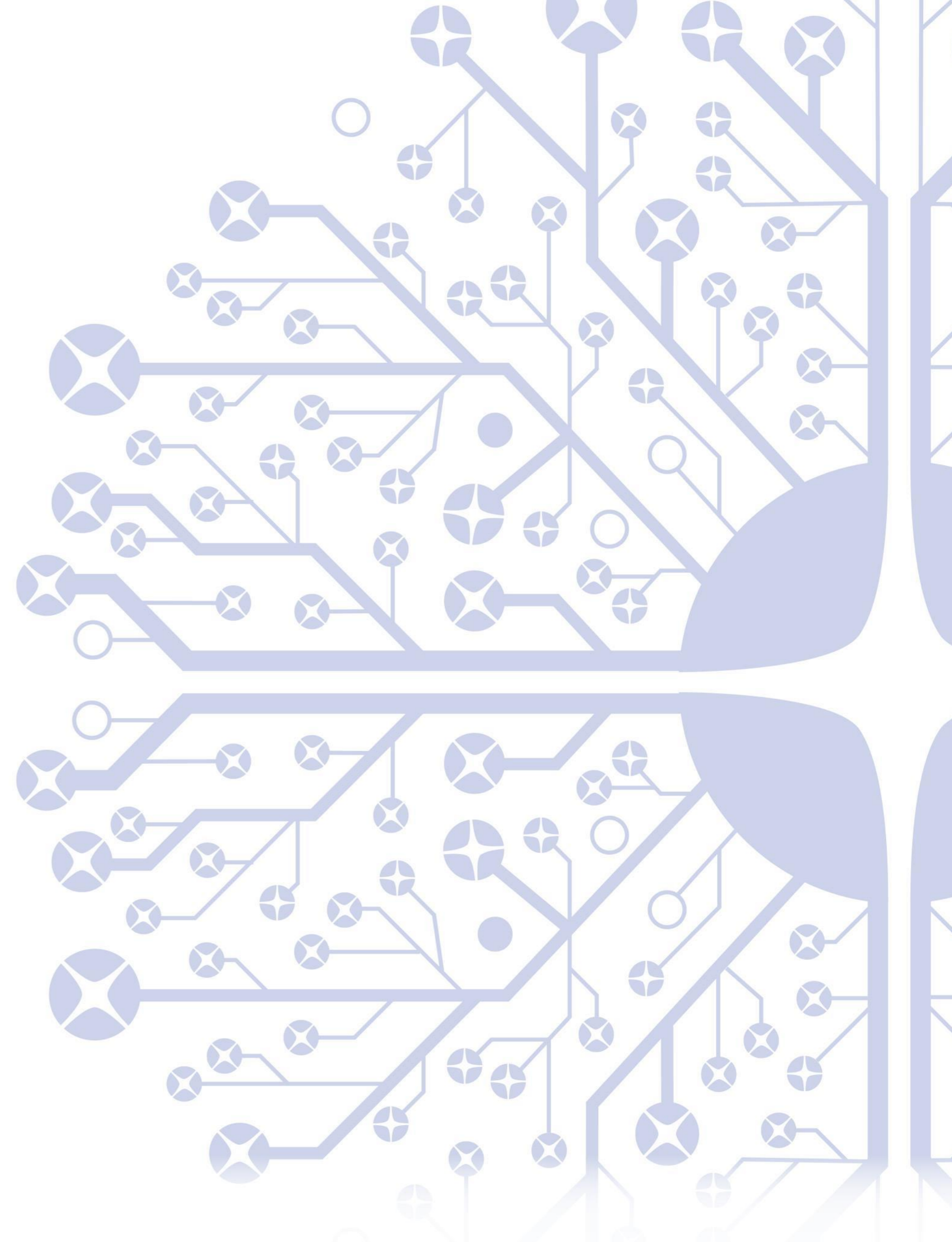
Datalogic exclusive
Locking System
Only on **Wireless 3 Slot
Docks**



SKORPIO X5



Mobility Suite



Datalogic Mobility Suite



Datalogic Commitment

We are making the devices.
We are making the tools.
We have the partnerships.

Do More, Do it faster and easier

Complete and advanced deployment tools
Latest development tools
No compromises on security

Maximize the ROI

Complexity, Risk and efforts at minimum
Control, administration and reliability at top
Do more with less



Datalogic Mobility Suite



DEPLOYMENT		 Scan2Deploy	 OEM Config	
MOBILE DEVICE MANAGEMENT				
MODERN TE				
APPLICATION DEVELOPMENT				
SECURITY				



Datalogic proprietary charging profiles

- Sophisticated battery management profiles dictated by User or Administrator.
- Battery Life / Speed of Charging / Capacity: [BEST 2 OUT OF 3]

The image displays four screenshots of the 'Charging Profile - Setup' interface, each showing a different configuration of battery management preferences. Each screen has a dark blue header with a hamburger menu icon and the text 'Charging Profile - Setup'. The main content area is light gray and contains the following sections:

- Current Profile:** A text label indicating the active profile.
- Preferences (select 1 or 2):** Three circular icons representing Battery Lifetime (heart with pulse), Maximum Capacity (battery), and Charging Speed (lightning bolt). The selected preferences are highlighted with a red circle.
- Selected Profile Details:** A text block describing the characteristics of the selected profile.
- Apply Profile:** A gray button at the bottom of each screen.

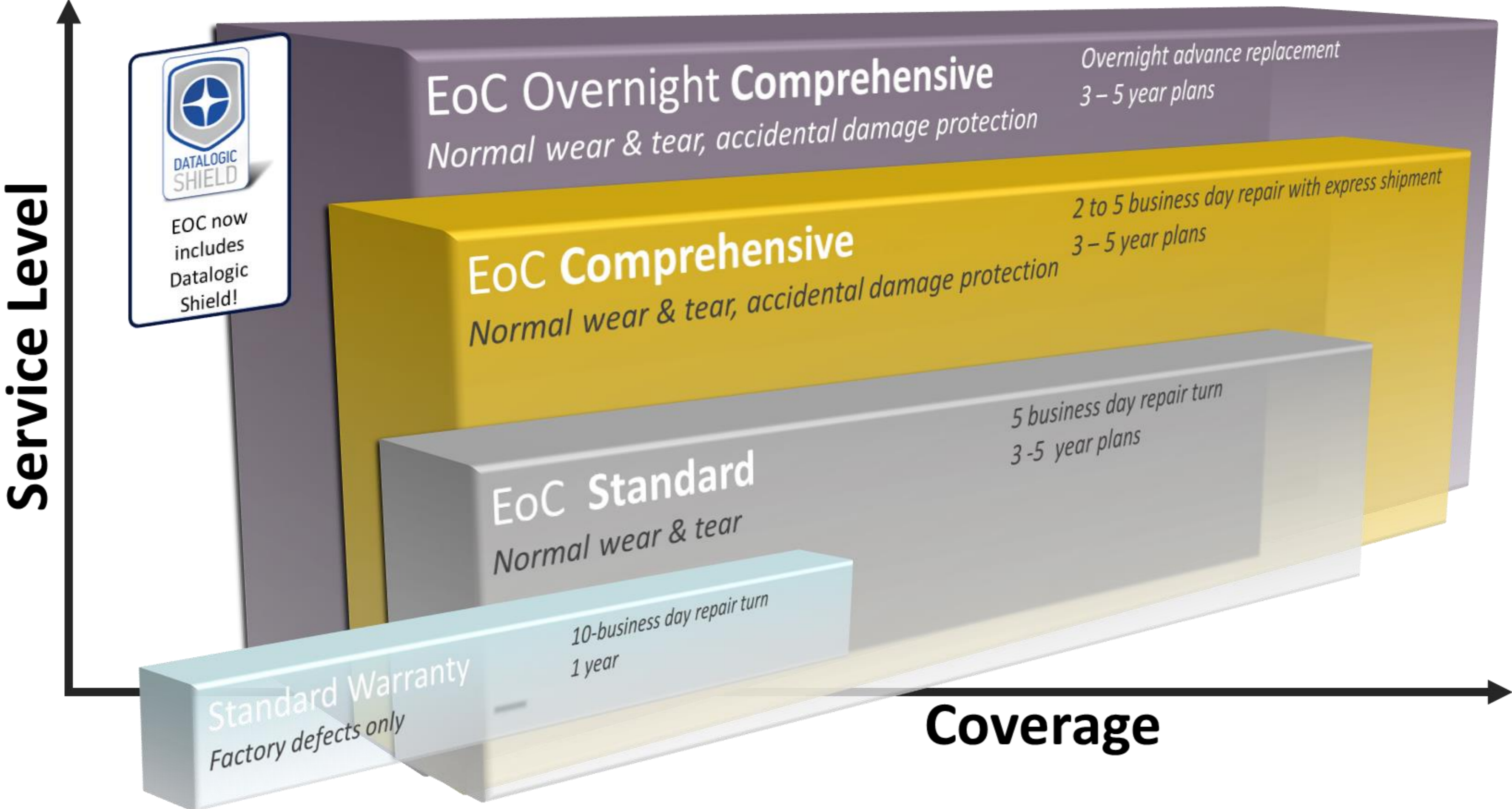
Screen 1: Current Profile: Battery Lifetime + Maximum Capacity. Preferences: Battery Lifetime and Maximum Capacity are selected (circled in red). Details: Standard battery lifetime, Maximum capacity near 100%, Recharge time around 6.3 hours.

Screen 2: Current Profile: Battery Lifetime + Charging Speed. Preferences: Battery Lifetime and Charging Speed are selected (circled in red). Details: High battery lifetime, Maximum capacity around 80%, Recharge time around 2.7 hours.

Screen 3: Current Profile: Maximum Capacity + Charging Speed. Preferences: Maximum Capacity and Charging Speed are selected (circled in red). Details: Low battery lifetime, Maximum capacity around 100%, Recharge time around 2.4 hours.

Screen 4: Current Profile: Charging Speed. Preferences: Charging Speed is selected (circled in red). Details: Standard battery lifetime, Maximum capacity around 80%, Recharge time around 2.1 hours.

EASEOFCARE: Service Made Simple



Datalogic Shield



- New software service for Datalogic Android mobile computers
- Subscription for predictable, recurring software updates
- Includes Android OS upgrades
- Includes at least quarterly Android security patches
- Available through Ease of Care or SW-only contract
- For more info: www.Datalogic.com/Shield

Extend the lifecycle of your Android devices!
5+ years of support



SKORPIO X5

Key Applications

Skorpio X5 Retail Applications

Online Order Fulfillment

Store Mgmt / Replanishment

Price check and update

Warehouse Management

Inventory Management




Receiving Goods in Store

Voice Recognition Applications

Leverage the big screen to manage the most modern and complex Retail Applications. Enjoy the ergonomic and ease of use in any Back store or warehouse.



Skorpio X5 - Retail

End User Needs	Why we Win
<ul style="list-style-type: none">• Large Display (for complex apps and display of product pictures)• Easy exception notification methods• Ergonomic keyboard for Inventory count• Proof of incidents on the spot• Reading distance up to 1m in the backstore / warehouse• Reliable Wi-Fi for online PLU updates	<ul style="list-style-type: none">• 4.3 inches Display: better visibility in this class of device • Incredibly ergonomic and snappy• Fast CPU and plenty of memory to run multi-apps at once • 3 keyboard options to match application needs• Rear 13MP Camera for quickly collect proof of damage• Mid Range scan engine option for backroom/warehouse 



Skorpio X5 T&L/Warehouse Applications

Warehouse Management

Picking / Order Fulfilment

Receiving and Put away

Loading and Unloading

Inventory



Reverse Logistics

Voice Applications

Ergonomic, Snappy
and with latest Wi-Fi protocols
for reliable and fast roaming.
Perfect device for warehouse
operations with superior
scanning performance scan
engine options



Skorpio X5 – Transportation & Logistics

End User Needs	Why we Win
<ul style="list-style-type: none">• Scanning intensive Applications• Physical keyboard for fast data entry with TE• Highly visible Function Keys for shortcuts• Ease of Use: unexperienced/new user fast ramp up• Scans happen at mid to long distance	<ul style="list-style-type: none">• 4 Different scan engines including: Mid Range and XLR options (coming soon) • Incredibly Snappy• Fast CPU and plenty of memory  to run multi-apps at once• 3 Different Keyboards including specific TE overlays• Numeric Keyboard engineered for the warehouse user• 3 scan buttons + Trigger



Skorpio X5 Manufacturing Applications

Shipping & Receiving

Picking and Put-away

Inventory Management

Kitting

Work Order Management




Production Line Replenishment

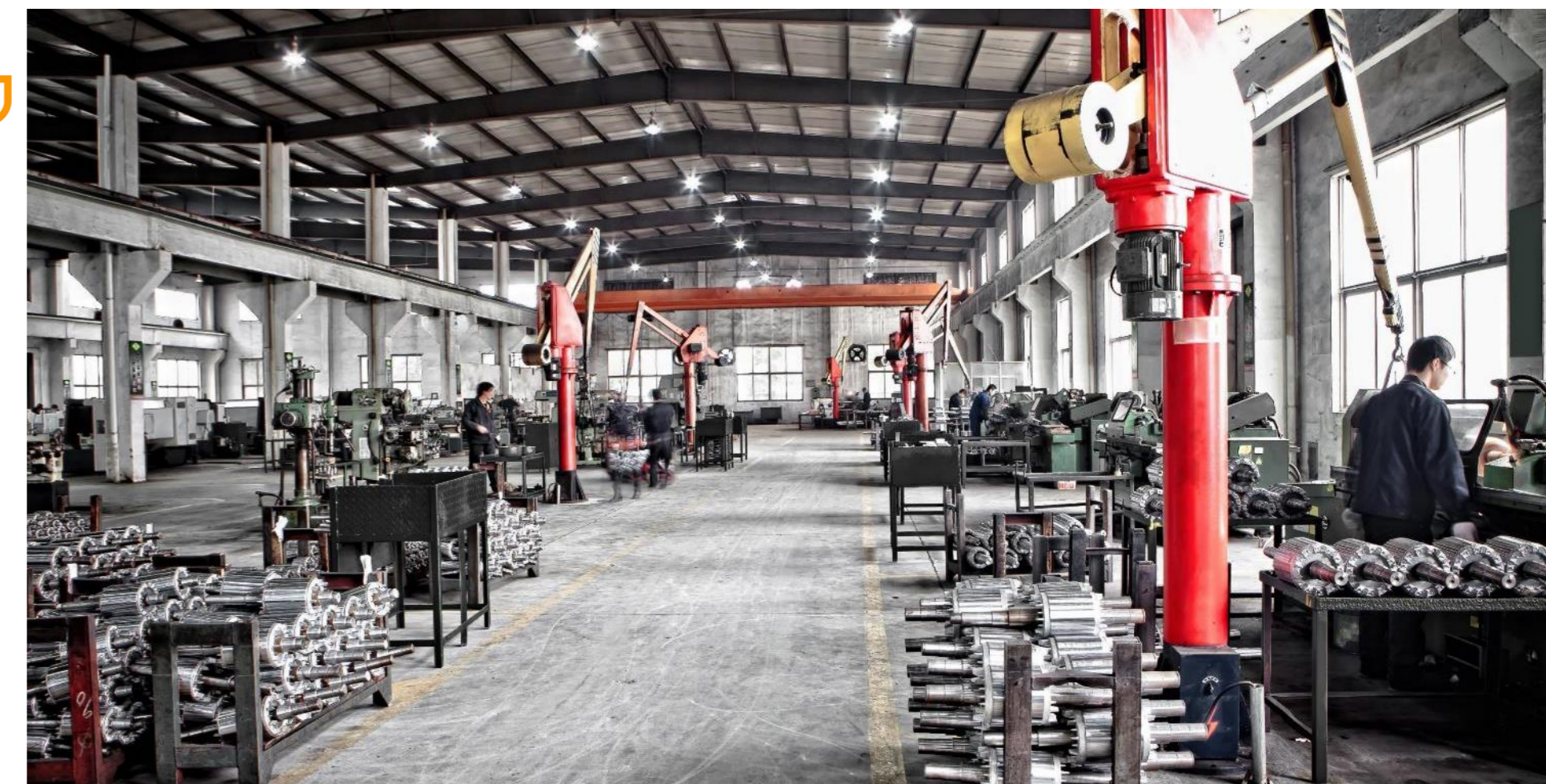
Quality Control

Production chains can benefit from all the Skorpio X5 features: scan engine options, good read feedback, Wi-Fi performance in low coverage areas



Skorpio X5 – Manufacturing

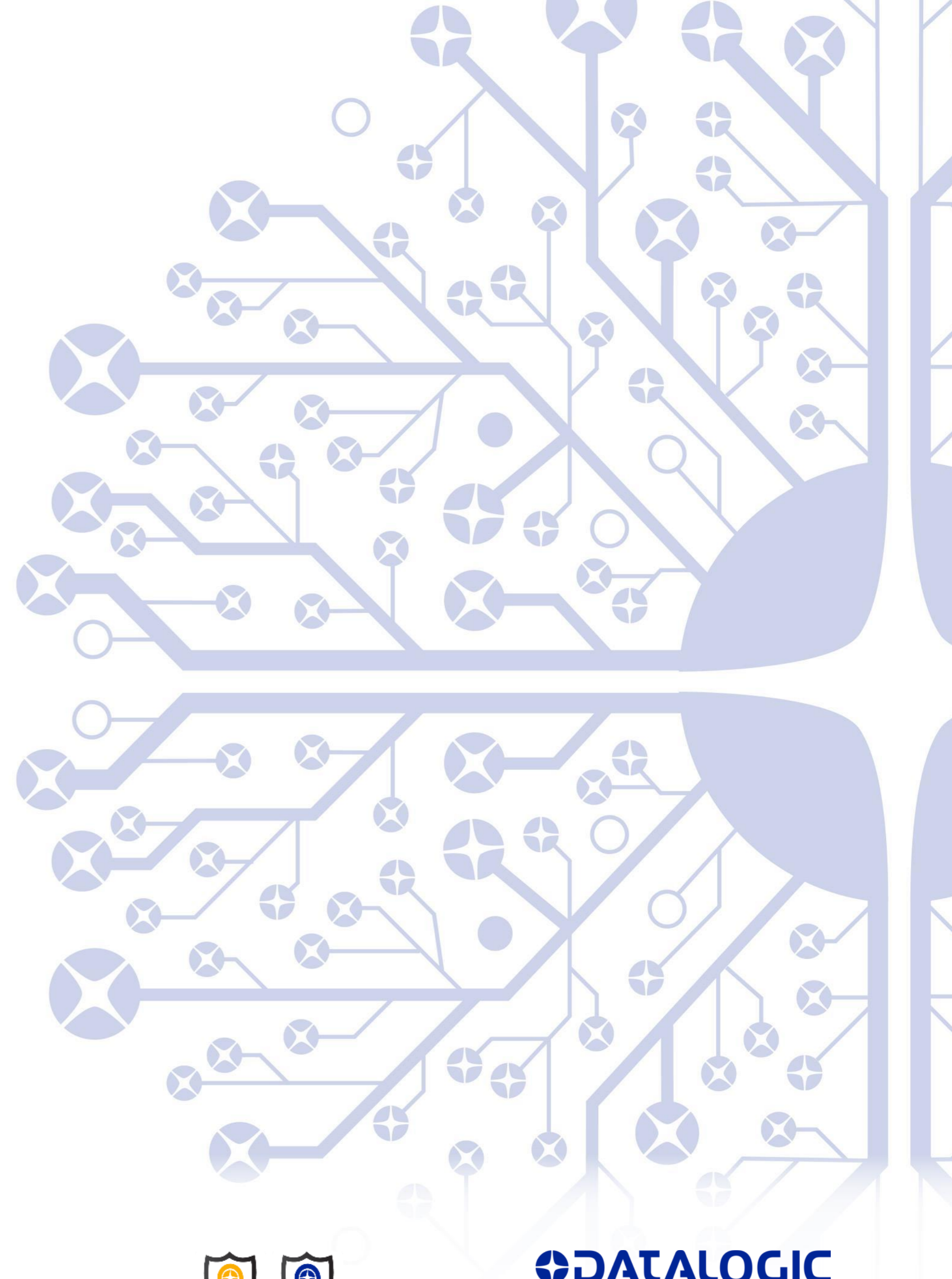
End User Needs	Why we Win
<ul style="list-style-type: none"> • Mid to Long-Range Scanning • Difficult reading conditions, damaged labels, under film,.. • Compliance with use in the yard (light, rain, noise) • In Quality Control need for “Rich” Applications and proof of defect in in case of faulty items 	<ul style="list-style-type: none"> • Choice from 3 different Scanning options + XLR (Coming Soon) with Datalogic scanning Performance  • High-Visibility display, IP65 and Green Spot feedback for use in exteriors  • Biggest in his category 4.3” display allow to run any complex application  • Rear 13MP Camera for proof of faulty items



SKORPIO X5

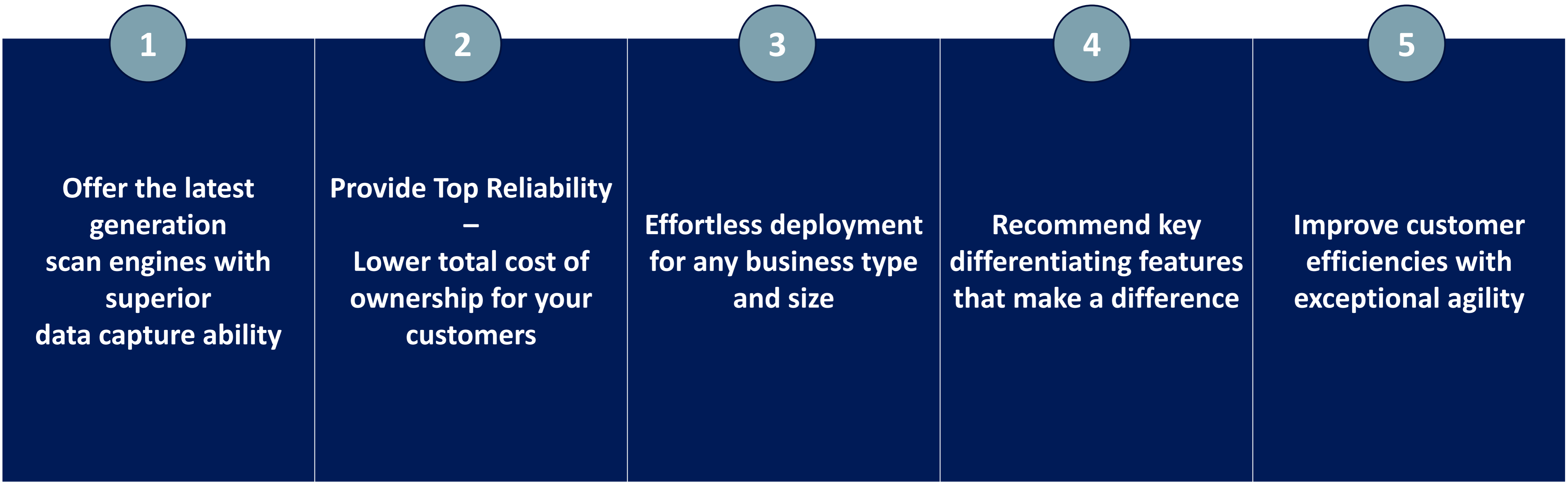


TOP 5 reasons



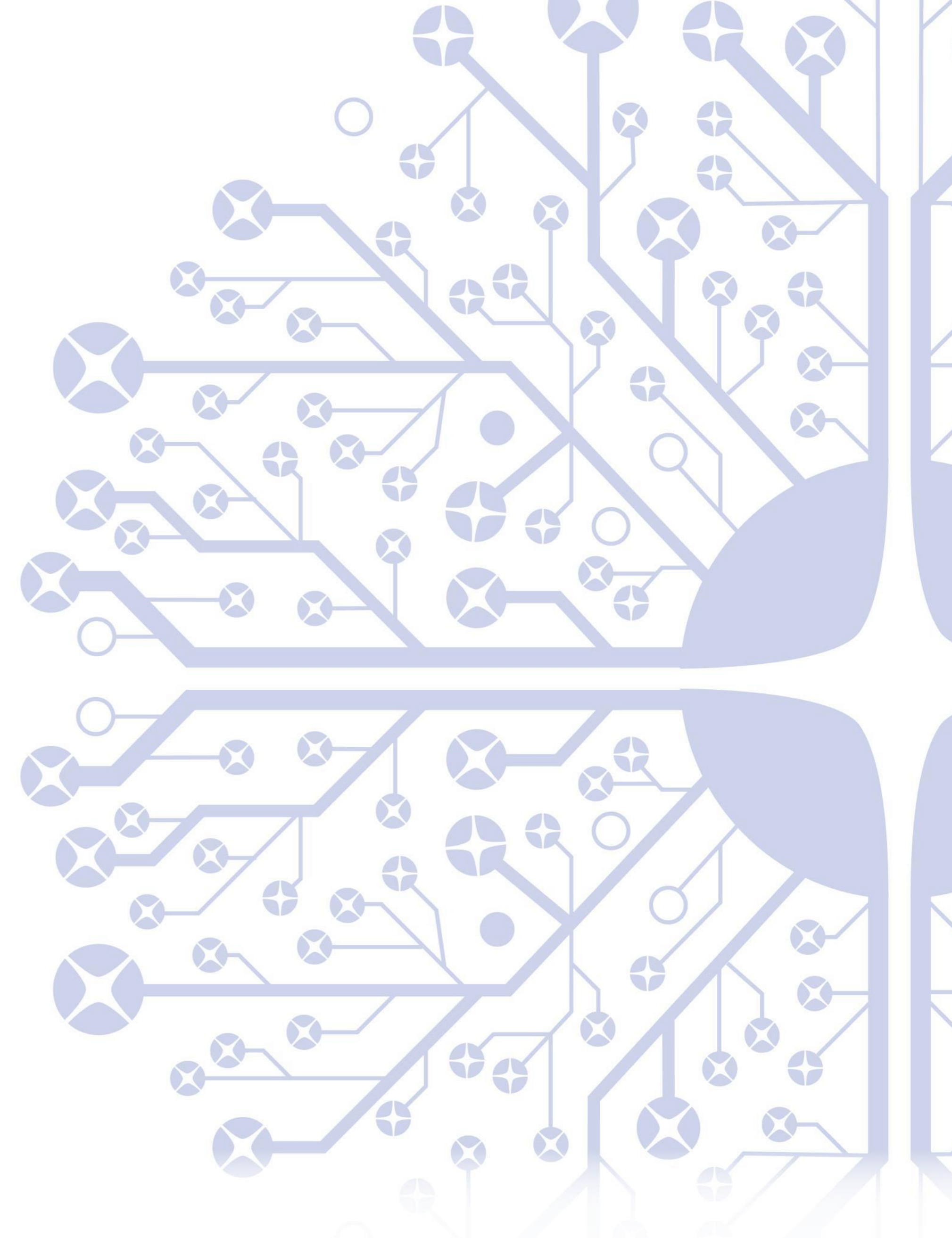
Skorpio X5, why recommend the most powerful Mobile Computer to your customers

Unstoppable 24/7 operations, top-level productivity, efficiency and performance



SKORPIO X5

is more...



**More
Powerful**



**More
Visible**



**More
Reliable**



**More
Robust**



**More
Ergonomic**



**More
Flexible**

...and everything you need to complete the Solution!



Single Slot Dock



3 / 6 - Slot Dock



Multi Battery Charger



Pistol Grip



Rubber Boot



Screen Protector

The Latest Generation of the Successful SKORPIO family



SKORPIO X5

THANK YOU

This presentation contains statements that are neither reported financial results nor other historical information. These statements are forward-looking statements. These forward-looking statements rely on a number of assumptions and are subject to a number of risks and uncertainties, many of which are outside the control of Datalogic S.p.A., that could cause actual results to differ materially from those expressed in or implied by such statements, such as future market conditions, currency fluctuations, the behavior of other market participants and the actions of governmental and state regulators

© 2020 Datalogic S.p.A. and/or its affiliates - All rights reserved. • Without limiting the rights under copyright, no part of this documentation may be reproduced, stored in or introduced into a retrieval system, or transmitted in any form or by any means, or for any purpose, without the express written permission of Datalogic S.p.A. and/or its affiliates • Datalogic and the Datalogic logo are registered trademarks of Datalogic S.p.A. in many countries, including the U.S. and the E.U. • All other trademarks and brands are property of their respective owners.

Datalogic S.p.A.

Via Candini, 2 - 40012 Lippo di Calderara di Reno - Bologna (Italy)

Tel. +39 051 3147011 | Fax +39 051 3147205

corporate@datalogic.com

ww.datalogic.com

SP-SKORPIO-X5-EN Rev A 20201112

